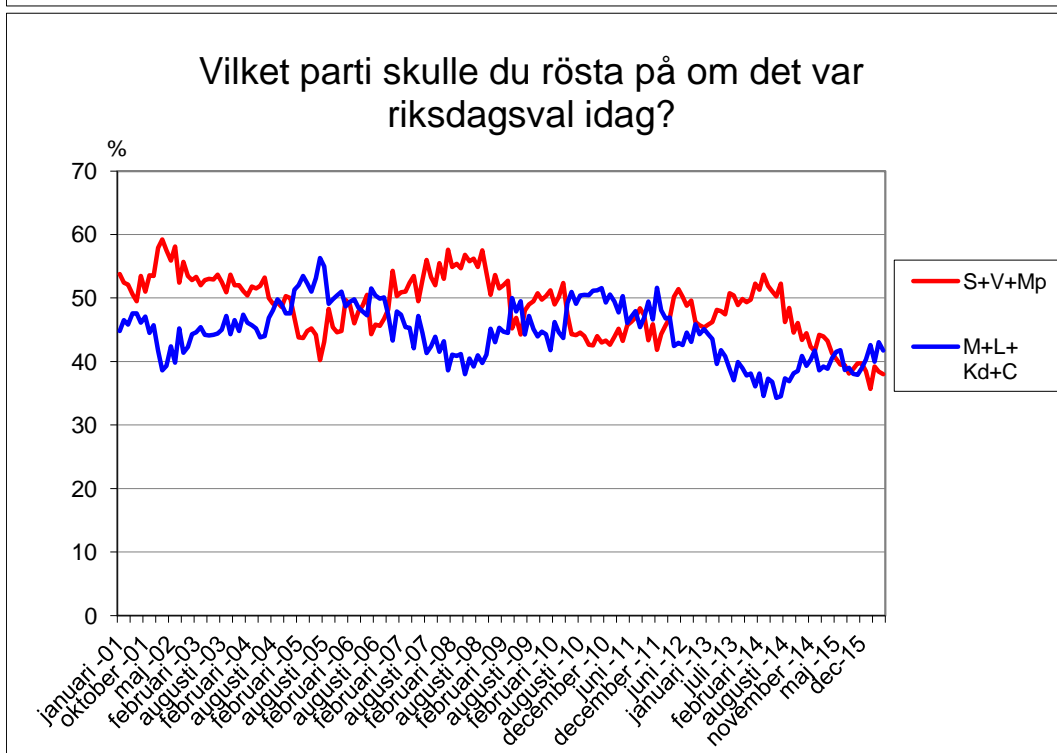
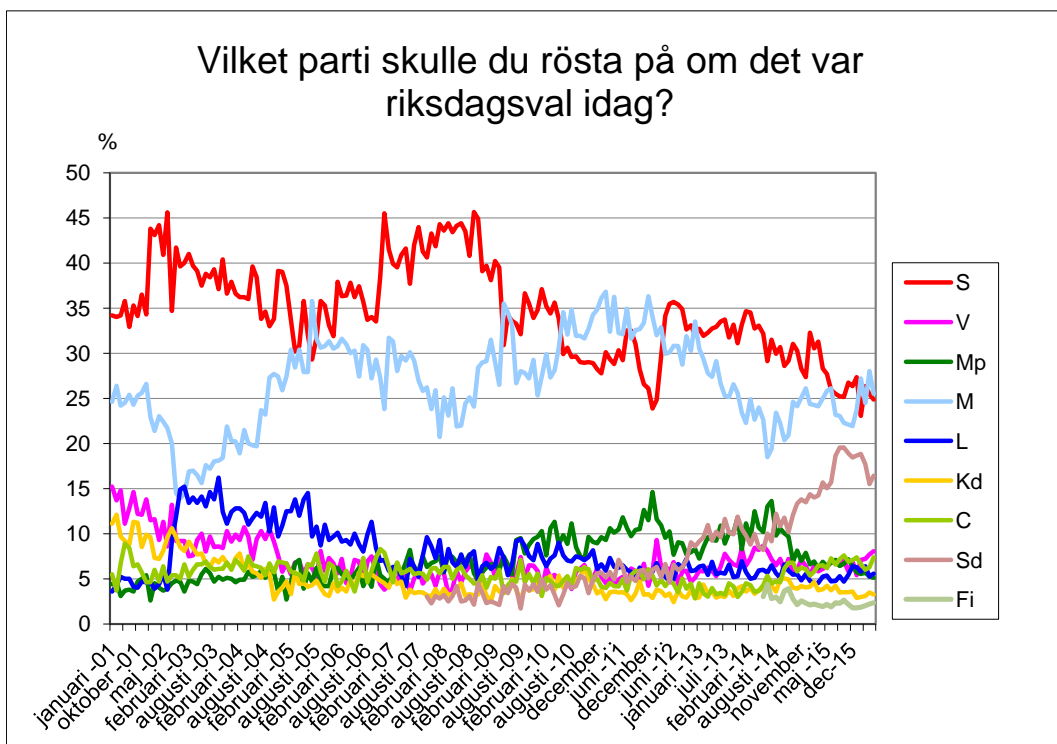


## Demoskops väljarbarometer



**1254 telefonintervjuer med röstberättigade 18 år och äldre, 26/4-3/5 2016.**

För 1250 intervjuer är en förändring statistiskt säkerställd om den för partier med ca 35% stöd är större än +/- 3,7%, för partier med ca 25% stöd större än +/- 3,4%, för partier med ca 10% stöd större än +/- 2,4% och för partier med ca 5% stöd större än +/- 1,7%.

## Demoskops väljarbarometer

	S	V	Mp	M	L	Kd	C	Sd	Fi	Övr	S+V +Mp	M+L +Kd+C	Osäkra
<b>2016</b>													
maj	24.9	8.0	5.1	25.5	5.6	3.3	7.4	16.4	2.3	1.5	38.0	41.7	11.7
april	25.5	7.7	5.3	28.0	5.3	3.5	6.3	15.5	2.2	0.8	38.4	43.1	10.8
mars	26.3	7.2	5.7	24.5	6.4	3.1	6.0	17.7	2.0	1.1	39.2	39.9	8.6
februari	23.0	7.1	5.5	27.2	5.8	3.0	6.6	18.8	1.9	1.0	35.7	42.6	7.7
januari	27.3	5.4	5.7	23.8	6.3	2.9	7.4	18.7	1.8	0.8	38.5	40.3	10.5
<b>2015</b>													
december	26.3	7.0	6.4	21.9	6.4	3.6	7.0	18.5	1.8	1.1	39.7	39.0	11.2
november	26.7	5.8	7.2	22.1	5.4	3.5	6.9	18.9	2.2	1.3	39.7	37.9	12.8
oktober	25.2	7.0	6.7	22.3	4.7	3.5	7.6	19.5	2.6	0.9	38.8	38.1	13.0
september	25.2	6.5	6.4	23.1	5.3	3.5	7.2	19.5	2.3	1.1	38.1	39.0	10.3
juli	25.5	6.8	7.1	23.1	4.7	4.2	6.6	18.7	2.4	0.9	39.4	38.7	11.9
juni	25.9	6.8	6.8	26.1	4.7	3.7	7.3	15.7	1.9	1.1	39.5	41.8	13.0
maj	27.7	6.3	6.4	25.8	5.3	4.2	6.2	15.0	2.2	0.8	40.4	41.5	13.4
april	28.3	6.1	6.9	25.0	5.3	3.8	6.5	15.7	1.9	0.6	41.3	40.5	11.2
mars	31.3	5.8	6.2	24.1	4.5	3.7	6.5	14.2	2.1	1.6	43.3	38.8	10.6
februari	30.6	6.5	6.9	24.3	4.5	4.7	5.8	14.0	2.2	0.7	43.9	39.2	10.7
januari	32.3	5.3	6.6	24.4	4.8	4.1	5.3	14.4	2.1	0.7	44.2	38.6	10.5
<b>2014</b>													
december	27.3	6.4	7.9	26.1	5.5	4.0	6.1	13.5	2.3	0.8	41.7	41.7	10.5
november	28.3	7.1	7.0	25.1	4.8	4.2	6.2	13.8	2.6	1.0	42.3	40.3	10.6
oktober	30.3	6.0	8.1	24.1	5.5	3.9	5.8	13.3	2.1	0.8	44.4	39.3	8.6
17-21 september	31.0	5.5	6.9	24.6	5.5	4.0	6.8	12.1	2.8	0.9	43.4	40.9	6.9
<b>Val 2014</b>	<b>31.0</b>	<b>5.7</b>	<b>6.9</b>	<b>23.3</b>	<b>5.4</b>	<b>4.6</b>	<b>6.1</b>	<b>12.9</b>	<b>3.1</b>	<b>1.0</b>	<b>43.6</b>	<b>39.4</b>	
6-11 september	29.2	7.2	9.7	20.9	5.9	4.9	6.8	10.2	3.9	1.4	46.1	38.5	16.2
2-8 september	28.6	5.9	10.0	20.4	6.6	5.0	6.1	11.8	3.7	1.9	44.5	38.2	16.0
september	30.7	7.2	10.6	22.2	5.1	5.0	4.6	10.8	2.5	1.4	48.4	36.9	15.2
augusti	29.9	6.5	9.8	23.4	5.6	3.6	4.7	12.2	3.0	1.3	46.2	37.3	13.8
juli	31.5	7.2	13.6	19.4	6.5	4.2	4.5	9.2	2.8	1.2	52.3	34.5	15.9
juni	29.1	8.1	13.0	18.5	5.7	4.8	5.3	10.0	4.4	1.1	50.3	34.3	18.5
maj	32.2	8.7	10.2	22.6	6.0	3.9	4.3	8.2	3.0	1.0	51.0	36.8	20.2
april	33.0	8.2	10.7	24.0	5.9	3.7	3.7	8.5		2.3	51.9	37.3	22.2
mars	32.7	8.4	12.5	22.6	5.1	3.3	3.6	10.0		1.8	53.7	34.6	14.3
februari	34.5	7.3	9.6	24.9	5.0	4.0	4.3	8.8		1.7	51.3	38.1	21.5
januari	34.7	6.5	11.1	22.3	5.8	3.6	4.5	9.8		1.8	52.3	36.1	21.5
<b>2013</b>													
december	33.1	8.3	8.3	23.4	7.0	4.2	3.5	10.5		1.6	49.7	38.1	15.8
november	31.1	6.4	11.8	25.6	5.3	3.9	3.0	11.9		1.0	49.3	37.8	19.0
oktober	33.2	6.6	10.1	26.6	5.2	3.1	4.2	9.9		1.2	49.9	39.0	17.1
september	31.7	7.1	10.1	25.1	6.6	3.7	4.5	10.1		1.1	48.9	39.9	17.9
juli	33.7	7.8	8.9	25.3	5.6	3.0	3.2	11.6		0.9	50.4	37.1	20.3
juni	33.5	6.4	10.9	26.6	5.7	3.1	3.4	9.6		0.8	50.8	38.8	18.1
maj	32.9	5.3	9.2	29.1	5.5	2.9	3.3	9.9		1.8	47.4	40.8	17.8
april	32.7	5.9	9.3	27.4	6.9	3.6	4.0	9.2		1.0	48.0	41.8	14.6
mars	32.3	6.2	9.6	27.8	5.4	3.4	3.0	11.0		1.3	48.1	39.6	17.8
februari	31.9	5.8	8.5	29.4	6.5	4.4	3.4	9.6		0.7	46.2	43.6	19.2
januari	32.7	5.9	7.3	30.5	6.4	2.9	4.5	9.2		0.7	45.8	44.3	13.5
<b>2012</b>													
december	32.0	5.1	8.3	33.5	5.9	2.8	2.9	8.6		0.9	45.4	45.1	14.0
november	33.1	4.7	8.0	30.3	5.8	3.7	4.5	9.0		1.0	45.7	44.3	13.7
oktober	32.6	5.9	7.7	31.9	7.2	2.9	3.9	7.1		0.8	46.2	45.9	13.2
september	34.8	5.8	8.9	28.7	6.3	3.0	5.1	6.3		1.0	49.6	43.1	18.4
juli	35.4	4.4	9.1	30.8	6.6	3.7	3.5	6.0		0.7	48.8	44.6	13.8
juni	35.7	6.9	7.7	30.8	4.9	2.4	4.4	6.6		0.7	50.2	42.6	12.9
maj	35.5	5.7	10.2	30.1	4.7	3.4	4.8	4.6		1.1	51.4	43.0	12.4
april	34.1	6.5	9.5	29.9	5.2	3.1	4.2	6.6		0.8	50.2	42.4	13.0
mars	29.7	6.3	10.9	32.9	5.5	3.6	4.9	5.2		1.0	46.9	46.9	11.2
februari	24.8	9.3	11.6	32.0	6.7	3.8	4.3	6.3		1.2	45.7	46.8	13.2
januari	23.9	5.9	14.6	34.1	5.8	2.9	5.3	6.0		1.6	44.3	48.1	14.1
<b>2011</b>													
december	26.1	4.2	11.5	36.3	5.9	3.3	6.1	5.1		1.5	41.8	51.6	13.1
november	26.6	6.7	12.6	33.4	5.1	3.2	4.9	6.0		1.5	45.9	46.6	12.9
oktober	28.2	4.6	10.5	32.7	6.2	4.7	5.8	5.9		1.3	43.3	49.4	16.0
september	31.0	5.9	10.4	32.5	5.1	3.4	5.9	4.8		1.0	47.3	46.9	13.7
augusti	32.5	6.1	9.7	31.6	5.8	2.6	5.4	5.2		1.0	48.4	45.4	11.3
juli	32.5	3.8	10.6	34.9	6.0	3.3	3.7	4.6		0.5	46.9	47.9	13.1
Juni	29.2	5.2	11.8	32.1	6.5	3.5	5.0	6.3		0.4	46.3	47.1	10.2
maj	30.3	4.9	10.5	32.2	6.2	3.5	4.2	7.1		1.2	45.7	46.1	12.9
april	28.8	4.4	10.1	36.2	6.3	3.6	4.2	4.9		1.5	43.2	50.3	10.5
mars	29.3	5.2	10.6	32.4	7.3	3.5	4.6	5.7		1.3	45.2	47.8	10.3
februari	30.1	4.5	9.3	36.8	5.9	2.7	4.0	5.1		1.5	43.9	49.4	13.8

	S	V	Mp	M	L	Kd	C	Sd	Fi	Övr	S+V +Mp	M+L +Kd+C	Osäkra
januari	27.8	5.2	9.6	36.1	6.6	3.7	4.1	5.7		1.1	42.6	50.5	10.5
<b>2010</b>													
december	28.2	6.1	8.9	34.8	6.1	3.4	5.0	5.6		1.8	43.3	49.3	7.6
november	28.9	5.0	9.1	34.3	8.2	4.4	4.8	4.9		0.5	43.0	51.5	10.0
oktober	29.0	5.4	9.6	32.7	7.4	5.0	6.1	3.4		1.4	44.0	51.2	5.8
<b>Val 2010</b>	<b>30.7</b>	<b>5.6</b>	<b>7.3</b>	<b>30.1</b>	<b>7.1</b>	<b>5.6</b>	<b>6.6</b>	<b>5.7</b>		<b>1.4</b>	<b>43.6</b>	<b>49.3</b>	
15-sep	28.9	6.5	7.1	31.6	7.1	6.3	6.2	5.1		1.2	42.5	51.2	14.1
10-sep	29.0	6.1	7.5	31.9	7.3	5.2	6.0	5.3		1.6	42.6	50.4	14.4
september	29.7	5.8	8.5	31.9	7.5	4.9	6.2	4.2		1.3	44.0	50.5	11.9
augusti	29.6	3.9	11.2	34.8	6.9	4.3	4.4	4.0		1.1	44.6	50.4	12.9
juli	30.6	4.7	8.9	32.1	7.0	4.7	5.3	4.5		2.2	44.2	49.1	12.2
juni	29.9	4.6	9.8	34.5	7.6	4.0	4.8	3.3		1.5	44.3	50.9	15.6
maj	33.8	4.8	8.8	30.6	9.0	5.4	4.2	2.1		1.3	47.4	49.2	16.4
april	35.6	5.4	11.3	28.1	7.6	3.7	4.2	3.2		0.7	52.4	43.7	14.5
mars	34.4	5.1	10.6	27.3	7.2	5.3	4.7	4.3		1.0	50.2	44.6	13.6
februari	35.2	6.2	7.6	29.9	6.4	4.8	5.1	3.8		1.0	49.0	46.2	10.8
januari	37.1	3.8	10.3	27.4	7.4	3.9	3.1	5.0		2.0	51.2	41.8	10.6
<b>2009</b>													
december	34.8	5.9	9.7	25.3	8.9	4.5	5.6	3.5		1.8	50.3	44.3	10.1
november	33.9	6.4	9.4	29.3	7.1	3.8	4.5	4.4		1.2	49.7	44.7	11.0
oktober	35.5	6.5	8.8	27.2	7.5	3.7	5.5	3.7		1.6	50.7	44.0	12.6
september	36.6	5.1	7.8	27.8	8.6	4.1	4.6	4.4		1.1	49.5	45.1	14.4
augusti	32.1	7.4	9.5	28.0	9.4	2.7	7.1	1.7		2.0	49.0	47.2	12.7
juli	33.3	5.5	9.3	26.7	9.1	3.7	4.7	4.0		3.7	48.1	44.2	15.7
juni	33.6	5.2	5.5	33.1	6.6	5.0	4.8	4.5		1.8	44.2	49.5	11.9
maj	34.2	6.1	6.6	34.5	5.4	3.7	4.3	3.4		1.7	46.9	47.9	15.0
april	30.9	6.8	7.5	35.5	7.3	3.8	3.4	4.2		0.6	45.2	50.0	14.2
mars	39.5	7.2	6.0	26.5	8.4	3.6	6.0	2.1		0.7	52.7	44.5	14.2
februari	40.2	5.2	6.6	29.0	6.5	4.2	5.0	2.3		1.1	52.0	44.7	12.3
januari	38.1	6.8	6.6	31.5	6.1	2.5	5.2	2.5		0.6	51.5	45.3	14.8
<b>2008</b>													
december	39.7	7.7	6.3	29.1	6.8	3.2	4.0	2.3		1.0	53.6	43.0	11.9
november	39.1	5.7	5.7	29.0	6.4	4.4	5.4	3.4		0.9	50.5	45.2	11.9
oktober	44.9	4.3	4.8	28.4	4.9	3.2	4.5	4.5		0.5	54.0	41.1	14.3
september	45.6	6.2	5.6	24.1	8.1	3.2	4.5	2.1		0.6	57.5	39.8	12.7
augusti	40.8	6.4	7.7	25.1	7.6	3.3	5.0	3.1		1.0	54.9	41.0	14.3
juli	43.5	5.8	6.9	24.4	6.3	3.1	5.4	2.6		1.9	56.2	39.2	12.7
juni	44.4	4.6	6.8	22.0	7.7	4.5	6.3	2.5		1.3	55.8	40.5	14.1
maj	44.1	5.9	6.8	21.9	6.3	3.8	6.0	4.2		1.0	56.8	38.0	13.0
april	43.4	3.9	7.4	26.1	6.8	3.3	5.0	3.1		1.0	54.7	41.2	13.4
mars	44.4	3.3	7.7	23.1	8.3	3.2	6.3	2.5		1.2	55.4	40.9	10.4
februari	43.6	5.6	5.7	25.1	5.8	3.9	6.3	3.2		0.8	54.9	41.1	11.4
januari	44.3	5.8	7.5	20.7	9.3	3.0	5.6	2.8		1.0	57.6	38.6	9.2
<b>2007</b>													
december	41.8	4.2	7.0	25.9	7.3	3.9	6.2	3.1		0.7	53.0	43.2	11.5
november	43.3	5.5	6.7	23.8	8.6	3.0	6.2	2.3		0.7	55.5	41.6	12.3
oktober	40.6	5.1	6.3	26.2	9.6	3.2	4.9	3.0		1.1	52.0	43.9	10.5
september	41.3	4.5	7.5	25.8	7.6	3.5	5.6			4.3	53.3	42.4	10.3
augusti	44.0	6.1	5.9	27.0	5.2	3.5	5.6			2.7	56.0	41.4	11.8
juli	42.0	5.0	5.8	29.2	6.4	3.4	5.5			2.7	52.8	44.5	12.3
juni	37.7	3.6	8.2	30.1	7.2	3.8	6.1			3.3	49.5	47.2	10.1
maj	41.6	5.1	6.8	29.2	4.2	2.9	5.8			4.4	53.5	42.1	11.4
april	40.9	6.0	5.5	29.7	5.3	4.7	5.6			2.3	52.4	45.3	11.1
mars	39.5	4.8	6.7	28.0	6.2	4.4	6.8			3.6	51.0	45.4	8.9
februari	39.9	5.3	5.7	31.3	6.3	5.2	4.6			1.7	50.9	47.4	8.7
januari	41.5	4.3	4.5	31.7	5.9	4.0	6.3			1.8	50.3	47.9	11.4
<b>2006</b>													
december	45.5	3.8	5.0	23.8	7.1	4.5	7.9			2.4	54.3	43.3	12.2
november	38.4	4.4	5.4	27.3	7.0	4.8	8.3			4.4	48.2	47.4	9.8
oktober	33.5	5.8	7.4	29.3	8.4	5.1	7.3			3.2	46.7	50.1	10.8
<b>Val 2006</b>	<b>35.0</b>	<b>5.9</b>	<b>5.2</b>	<b>26.2</b>	<b>7.5</b>	<b>6.6</b>	<b>7.9</b>			<b>5.7</b>	<b>46.1</b>	<b>48.2</b>	
Valdagsprognos	35.2	5.3	6.2	28.5	7.8	5.0	7.3			4.7	46.7	48.6	
9-12 september	33.3	5.9	5.7	28.3	8.8	7.9	5.4			4.7	44.9	50.4	14.9
september	34.0	7.5	4.1	27.2	11.3	5.5	5.9			4.5	45.6	49.9	12.9
augusti	33.7	6.9	5.2	30.4	9.9	5.5	4.6			3.8	45.8	50.4	17.5
juli	35.7	4.4	4.2	30.9	8.0	5.3	7.3			4.2	44.3	51.5	17.5
juni	37.4	6.9	6.2	27.4	8.8	5.7	5.4			2.2	50.5	47.3	15.4
maj	36.2	7.1	5.5	30.3	10.0	4.0	3.6			3.3	48.8	47.9	17.6
april	37.8	5.2	4.9	30.0	8.8	4.9	4.8			3.6	47.9	48.5	23.2
mars	36.4	4.5	5.1	31.0	9.3	3.6	5.9			4.2	46.0	49.8	20.1
februari	36.3	7.2	5.5	31.6	9.1	4.0	4.7			1.6	49.0	49.4	17.6
januari	37.9	5.6	6.2	30.8	10.1	3.6	4.2			1.6	49.7	48.7	19.1

	S	V	Mp	M	L	Kd	C	Sd	Fi	Övr	S+V +Mp	M+L +Kd+C	Osäkra
<b>2005</b>													
december	31.9	6.7	6.2	30.5	9.7	4.5	6.3			4.2	44.8	51.0	13.1
november	33.1	7.3	4.2	31.3	9.3	3.1	6.7			5.0	44.6	50.4	14.1
oktober	35.3	5.9	4.2	30.8	11.0	3.3	4.7			4.8	45.4	49.8	15.8
september	35.8	8.1	4.4	30.6	8.7	4.0	5.8			2.6	48.3	49.1	16.4
augusti	31.7	5.2	6.2	31.6	10.8	4.8	7.8			1.9	43.1	55.0	15.8
juli	29.3	6.2	4.7	35.8	9.7	4.3	6.5			3.5	40.2	56.3	13.9
juni	32.0	6.6	5.6	27.9	14.5	4.1	6.6			2.7	44.2	53.1	16.4
maj	35.8	5.5	3.9	27.9	13.8	4.5	4.8			3.8	45.2	51.0	12.4
april	30.8	6.9	7.1	30.4	12.0	4.4	5.5			2.9	44.8	52.3	12.8
mars	30.2	6.8	6.7	28.4	13.8	5.7	5.6			2.8	43.7	53.5	13.7
februari	33.7	5.5	4.6	30.4	12.5	3.3	5.8			4.2	43.8	52.0	12.6
januari	37.5	6.7	2.7	27.4	12.5	4.7	6.7			1.8	46.9	51.3	17.1
<b>2004</b>													
december	39.0	5.8	5.2	25.9	10.9	4.0	6.8			2.4	50.0	47.6	13.8
november	39.1	7.6	3.6	27.4	9.7	3.6	6.9			2.1	50.3	47.6	11.4
oktober	33.8	9.1	5.7	27.7	12.9	2.7	5.7			2.4	48.6	49.0	14.1
september	33.0	10.5	5.8	27.3	10.2	5.6	6.7			0.9	49.3	49.8	15.1
augusti	34.6	9.4	5.1	23.2	13.4	6.1	5.4			2.8	49.1	48.1	13.6
juli	33.8	10.3	5.9	23.7	11.9	5.1	6.2			3.1	50.0	46.9	16.5
juni	38.4	9.4	5.4	19.7	12.3	5.6	6.4			2.8	53.2	44.0	15.4
maj	39.6	7.1	5.2	19.8	11.7	5.8	6.5			4.3	51.9	43.8	13.5
april	36.0	9.7	5.8	20.0	11.0	6.7	7.5			3.3	51.5	45.2	16.6
mars	36.2	10.7	4.9	21.5	12.3	6.0	5.9			2.5	51.8	45.7	10.4
februari	36.2	9.3	4.9	18.9	12.8	7.8	6.6			3.5	50.4	46.1	11.1
januari	36.6	9.9	4.6	20.2	12.8	7.3	7.1			1.5	51.1	47.4	12.7
<b>2003</b>													
december	37.9	9.1	5.0	20.3	12.4	6.1	6.0			3.2	52.0	44.8	12.1
november	36.6	10.3	5.1	21.9	11.1	6.7	6.8			1.5	52.0	46.5	9.2
15-22 okt	37.6	10.0	4.8	18.3	13.2	7.0	6.8			2.3	52.4	45.3	12.8
oktober	40.4	8.4	4.9	18.4	12.4	7.4	6.1			2.0	53.7	44.3	9.0
1-7 sept	35.5	10.6	5.7	18.1	13.6	6.7	6.9			2.9	51.8	45.3	13.0
september	37.1	8.6	5.2	18.1	16.2	6.8	6.1			1.9	50.9	47.2	13.5
18-26 aug	36.3	10.7	7.4	17.9	12.1	6.2	7.7			1.7	54.4	43.9	12.0
augusti	39.3	8.5	4.7	18.0	13.8	7.2	6.0			2.5	52.5	45.0	9.9
juli	38.4	9.7	5.6	17.2	14.6	6.3	6.3			1.9	53.7	44.4	9.9
juni	38.8	8.0	6.1	17.6	13.0	6.7	6.9			2.9	52.9	44.2	10.7
maj	37.5	10.0	5.5	15.6	14.1	7.8	6.6			2.9	53.0	44.1	12.2
april	39.1	9.3	4.4	16.5	13.4	7.7	6.6			3.0	52.8	44.2	9.5
mars	39.7	7.6	4.7	17.0	14.0	8.4	6.0			2.6	52.0	45.4	8.4
februari	41.0	7.5	4.8	16.9	13.4	9.1	5.2			2.1	53.3	44.6	11.3
<b>2002</b>													
december	40.0	9.2	3.6	14.4	15.2	8.1	6.6			2.9	52.8	44.3	9.0
november	39.6	9.2	4.7	13.9	14.9	8.5	5.0			4.2	53.5	42.3	9.9
oktober	41.7	9.2	4.8	14.5	11.9	9.6	5.4			2.9	55.7	41.4	5.1
<b>Val 2002</b>	<b>39.9</b>	<b>8.4</b>	<b>4.6</b>	<b>15.3</b>	<b>13.4</b>	<b>9.1</b>	<b>6.2</b>			<b>3.2</b>	<b>52.9</b>	<b>44.0</b>	
6-11 sept	36.3	9.3	4.2	20.4	12.0	10.3	4.0			3.5	49.8	46.7	13.6
september	34.7	13.2	4.5	20.0	9.2	10.6	5.4			2.4	52.4	45.2	10.9
juni	45.6	8.6	3.9	21.7	3.8	9.6	4.7			2.1	58.1	39.8	10.9
maj	40.9	11.3	3.7	22.4	5.5	8.1	6.4			1.7	55.9	42.4	12.7
april	44.2	9.3	4.0	23.0	4.4	7.2	4.7			3.2	57.5	39.3	10.2
mars	43.1	11.6	4.5	21.4	3.9	7.3	6.0			2.2	59.2	38.6	11.7
februari	43.8	11.5	2.6	22.9	4.6	9.6	4.6			0.4	57.9	41.7	9.7
<b>2001</b>													
december	34.3	13.8	5.4	26.6	4.6	9.9	4.6			0.8	53.5	45.7	11.4
november	36.5	12.1	5.0	25.6	4.7	8.5	5.7			1.9	53.6	44.5	10.6
oktober	34.1	12.2	4.7	25.3	4.0	11.2	6.6			1.9	51.0	47.1	11.9
september	35.3	14.6	3.6	24.3	4.1	11.3	6.4			0.4	53.5	46.1	14.8
juni	32.9	12.8	3.8	25.4	5.0	8.8	8.4			2.9	49.5	47.6	13.6
maj	35.8	11.1	3.7	24.5	5.0	9.2	8.9			1.8	50.6	47.6	10.5
april	34.2	14.8	3.1	24.2	5.2	9.7	6.7			2.1	52.1	45.8	9.9
mars	34.0	13.7	4.7	26.4	4.3	12.1	3.7			1.1	52.4	46.5	11
januari	34.2	15.2	4.4	24.6	3.6	11.1	5.5			1.4	53.8	44.8	12.4
<b>2000</b>													
december	32.0	15.8	5.3	23.4	6.5	11.5	4.2			1.3	53.1	45.6	10.4
november	32.4	16.1	4.7	24.8	4.4	11.6	3.4			2.6	53.2	44.2	8.6
oktober	33.5	15.7	2.9	27.0	5.3	10.9	3.4			1.3	52.1	46.6	11.4
september	32.5	14.1	4.9	24.9	4.7	13.8	4.0			1.1	51.5	47.4	9.3
juli	31.1	13.1	5.1	27.6	5.1	10.6	4.7			2.7	49.3	48.0	9.7
juni	32.8	16.7	5.2	26.3	3.5	8.6	4.0			2.9	54.7	42.4	11.9
maj	33.3	13.9	4.4	27.0	5.1	9.3	3.8			3.2	51.6	45.2	12.2
april	33.9	15.1	4.3	25.0	4.7	9.7	5.0			2.3	53.3	44.4	12.3

	S	V	Mp	M	L	Kd	C	Sd	Fi	Övr	S+V +Mp	M+L +Kd+C	Osäkra
mars	35.4	11.1	5.6	26.3	5.1	11.1	3.8			1.6	52.1	46.3	10.5
februari	32.5	13.7	5.4	25.4	5.7	10.5	4.2			2.6	51.6	45.8	11.6
januari	34.6	11.9	5.0	25.6	4.7	12.1	4.2			1.9	51.5	46.6	10.1
<b>1999</b>													
december	33.7	12.6	6.1	25.9	5.6	10.2	3.8			2.1	52.4	45.5	8.7
november	34.3	11.3	6.5	25.9	5.0	10.4	4.8			1.8	52.1	46.1	10.3
oktober	30.8	14.1	6.8	26.5	4.7	11.1	3.2			2.8	51.7	45.5	8.5
september	35.1	12.2	6.9	26.0	4.6	9.9	3.8			1.5	54.2	44.3	9.7
augusti	30.6	14.1	6.6	27.3	6.1	9.9	4.1			1.3	51.3	47.4	9.2
maj	31.5	14.8	4.8	28.1	4.2	10.0	4.8			1.8	51.1	47.1	11.1
april	34.2	12.8	4.9	22.1	4.5	13.6	4.2			3.7	51.9	44.4	8.2
mars	33.5	12.0	6.4	26.7	4.3	11.5	3.5			2.1	51.9	46.0	10.0
februari	32.7	12.4	6.3	25.1	4.8	12.3	4.1			2.3	51.4	46.3	10.1
januari	34.0	12.3	5.9	24.0	5.1	12.8	3.8			2.1	52.2	45.7	9.7
<b>1998</b>													
december	34.3	11.3	6.6	24.3	5.2	10.0	4.5			3.8	52.2	44.0	9.0
november	33.8	12.0	5.8	24.6	4.0	12.1	4.2			3.5	51.6	44.9	7.6
oktober	34.2	13.4	5.5	24.0	5.0	11.0	5.3			1.6	53.1	45.3	7.0
<b>Val 1998</b>	<b>36.4</b>	<b>12.0</b>	<b>4.5</b>	<b>22.9</b>	<b>4.7</b>	<b>11.8</b>	<b>5.1</b>			<b>2.6</b>	<b>52.9</b>	<b>44.5</b>	
16-sep	35.6	12.9	5.2	23.8	5.0	9.1	5.8			2.6	53.7	43.7	
09-sep	34.0	12.2	5.6	25.5	5.5	8.4	6.3			2.5	51.8	45.7	
02-sep	37.4	11.9	5.4	25.9	5.7	6.1	6.0			1.6	54.7	43.7	
26-aug	35.3	11.2	4.8	27.5	6.3	6.0	6.5			2.4	51.3	46.3	
20-aug	37.9	11.1	6.3	24.7	5.9	5.7	5.0			3.4	55.3	41.3	
juni	37.4	11.4	7.0	27.0	5.1	4.5	5.8			1.8	55.8	42.4	
maj	37.7	9.8	6.1	28.5	5.8	3.9	5.9			2.3	53.6	44.1	
april	38.3	10.2	6.2	25.7	6.8	4.0	6.5			2.3	54.7	43.0	
mars	35.3	10.0	6.4	26.9	7.3	5.2	6.4			2.5	51.7	45.8	
februari	37.0	9.9	7.2	26.6	7.1	5.5	4.4			2.3	54.1	43.6	
januari	37.8	10.4	6.3	30.4	5.3	3.1	4.9			1.8	54.5	43.7	
<b>1997</b>													
97 kv 4	38.2	7	7	33.4	4.4	2.9	4.2			2.9	52.2	44.9	
97 kv 2	30.2	10.2	7.3	34.3	6.5	5	4.9			1.6	47.7	50.7	
97 kv 1	28.2	11.8	8.5	30.2	5.5	4.3	7.8			3.7	48.5	47.8	
<b>1996</b>													
96 kv 4	30.8	12.8	7.4	27.4	6.7	4.2	6.1			4.6	51.0	44.4	
96 kv 3	33.8	10.3	8.5	28.7	6.3	2.8	7.2			2.4	52.6	45.0	
96 kv 2	32	15	9.8	25.7	7.4	2.6	6			1.5	56.8	41.7	
96 kv 1	35.8	12.9	8.4	27.6	4.3	2.1	7.3			1.6	57.1	41.3	
<b>1995</b>													
95 kv 4	32.5	11.8	12.2	28.7	5.2	2.7	6.8			0.1	56.5	43.4	
95 kv 3	33.4	13.5	6.5	28.1	7.2	2.6	7.4			1.3	53.4	45.3	
95 kv 2	33.3	15.1	7.1	26.5	6.4	1.8	8			1.8	55.5	42.7	
95 kv 1	39.4	10.2	6.8	25.2	7	3.1	7			1.3	56.4	42.3	
<b>1994</b>													
<b>Val-94</b>	<b>45.3</b>	<b>6.2</b>	<b>5</b>	<b>22.4</b>	<b>7.2</b>	<b>4.1</b>	<b>7.7</b>			<b>2.1</b>	<b>56.5</b>	<b>41.4</b>	
94 kv 3	49.6	4.9	4.8	22.9	7.1	3	5.8			1.9	59.3	38.8	
94 kv 2	50	4.5	3.8	22.7	6	3.1	7.4			2.5	58.3	39.2	
94 kv 1	51.8	3	2.6	23.3	6.2	2.4	6.6			4.1	57.4	38.5	
<b>1993</b>													
93 kv 4	46	4	5.4	23.4	7.2	2.4	6.3			5.3	55.4	39.3	
93 kv 3	48.9	3.1	1.8	19.8	7.9	3.1	7.4			8	53.8	38.2	
93 kv 2	46.8	2.9	3.7	22.3	8.4	3.6	5.7			6.6	53.4	40.0	
93 kv 1	49.4	2.8	2.6	21.3	6.3	2.8	7.1			7.7	54.8	37.5	
<b>1992</b>													
92 kv 4	45.8	3.6	3.4	20.8	6.5	3.2	5.6			11.1	52.8	36.1	
92 kv 3	41.1	3.3	3.8	23.2	7.6	4.2	5.8			11	48.2	40.8	
92 kv 2	42.7	3.5	3	23.2	7.8	3.2	6			10.6	49.2	40.2	
92 kv 1	40.8	3.3	2.8	26.9	8.7	4.9	6.1			6.5	46.9	46.6	
<b>1991</b>													
91 kv 4	40	3.6	3.4	26.6	9.1	5.5	6.9			4.9	47.0	48.1	
<b>Val-91</b>	<b>37.7</b>	<b>4.5</b>	<b>3.4</b>	<b>21.9</b>	<b>9.1</b>	<b>7.1</b>	<b>8.5</b>			<b>7.8</b>	<b>45.6</b>	<b>46.6</b>	
91 kv 3	32.8	4.5	3.2	24.3	12.1	7.3	7.8			8	40.5	51.5	
91 kv 2	28.7	6.1	3.4	25.3	10.2	8.3	7.8			10.2	38.2	51.6	
91 kv 1	28.2	5.1	4.4	25.3	13.1	5.4	7.7			10.8	37.7	51.5	
<b>1990</b>													
90 kv 4	29.6	6.1	5.2	28.1	15.6	4.7	7.8			2.9	40.9	56.2	
90 kv 3	31.9	7.2	6.7	27.1	12.6	3.5	8.9			2.1	45.8	52.1	
90 kv 2	30.4	9.2	6.5	24.5	13.7	2.6	9.9			3.2	46.1	50.7	
90 kv 1	31.7	7.4	8.3	23.9	14.4	2.3	10.1			1.9	47.4	50.7	